

SK2  
22WAY SIDE ENT FLEXI BRD SKT

Pins 4,6,7,14,15,19,20,21,22,22 are No-Connect

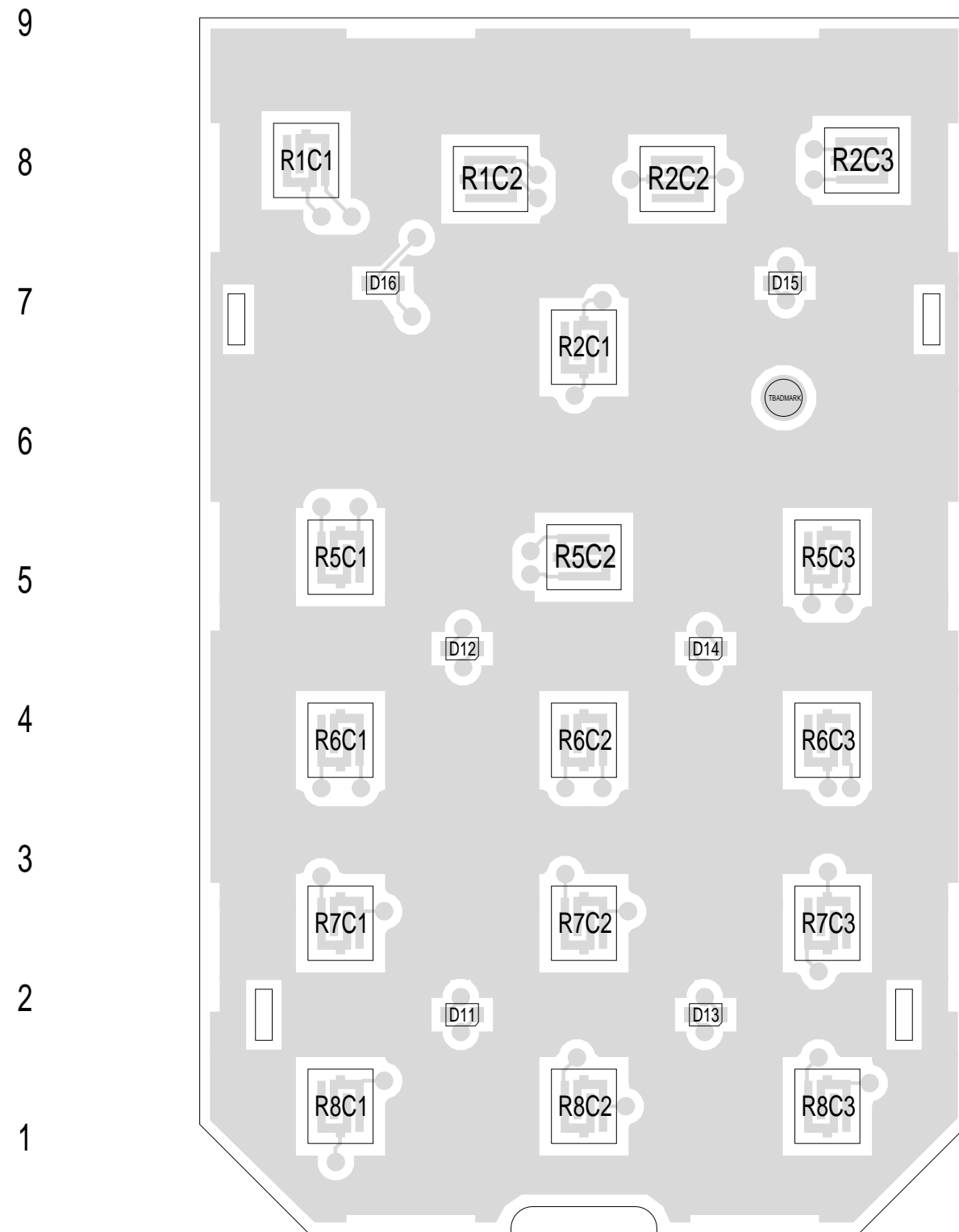
BBADMARK BADMARK  
TBADMARK BADMARK

CGND

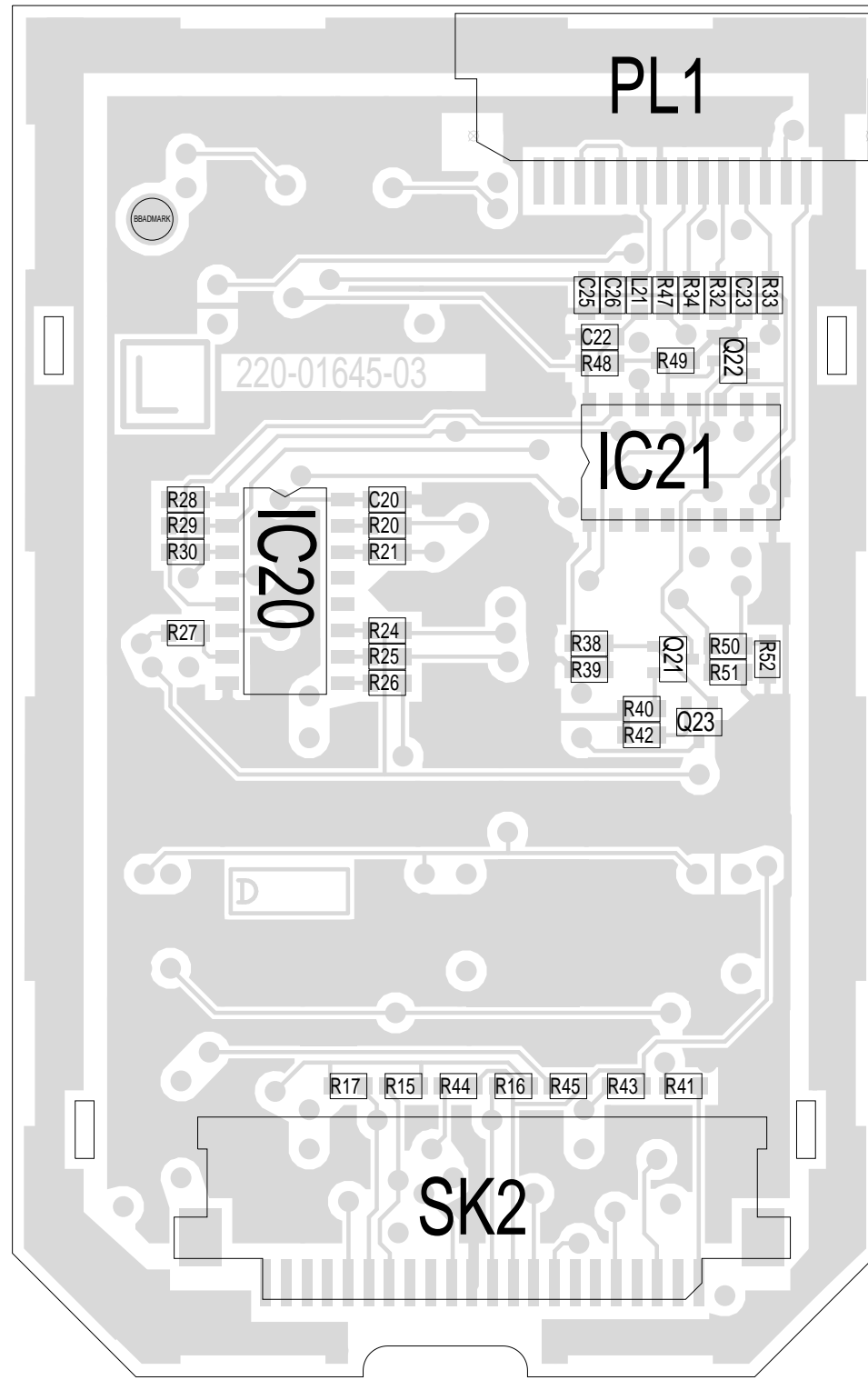
PL1  
Pins 1,2 are No-Connect  
14WAY SIDE ENTRY SKT

03B	REGENERATED PASTE SCREEN FOR SMD	BRD				13-06-03
03A	CCO NO 1645-003	BRD				13-02-01
02A	CCO NO 1645-002	BRD				08-09-00
01B	CCO NO.1645-001 CAMPANEL CHANGE	BRD				25-08-00
01A	THE FIRST SLIM USER INTERFACE	BRD				19/07/00
REV/ISS	AMENDMENTS	DRAWN	CHKD	D.O.	APVD	DATE

© TAIT ELECTRONICS			
LITE			
SLIM ORCA KEYPAD INTERFACE			
IPN:	ISSUE:	ID:	
220-01645-03	B	2.SC. 1	
PROJECT:	DESIGNER:	FILE NAME:	FILE DATE: NO.SHEETS:
ORCA	BRD	164503b	13-Jun-03 1



TAIT ELECTRONICS	IPN: 220-01645-03	ISS: A	ID: 1.TA	DATE: 13 Feb 2001
SLIM TOP UI PCB LAYOUT - TOP SIDE				



TAIT ELECTRONICS	IPN: 220-01645-03	ISS: A	ID: 4.BA	DATE: 13 Feb 2001
SLIM TOP UI PCB LAYOUT - BOTTOM SIDE				